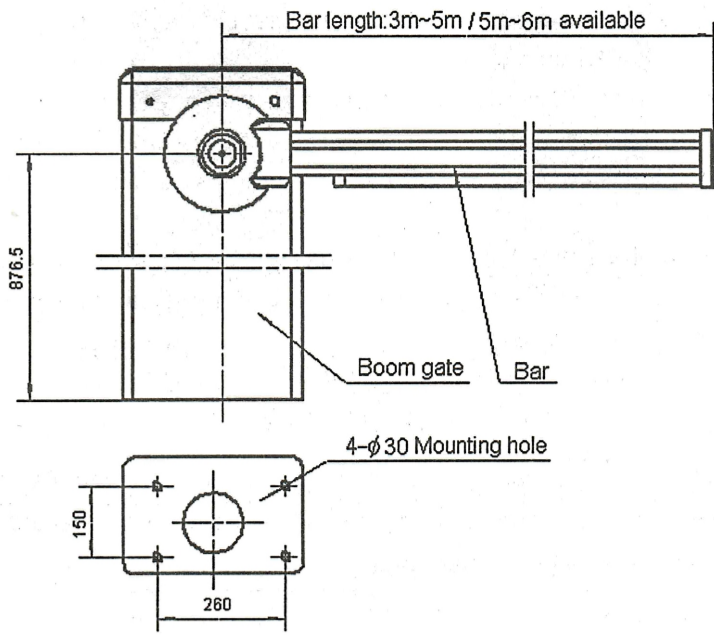
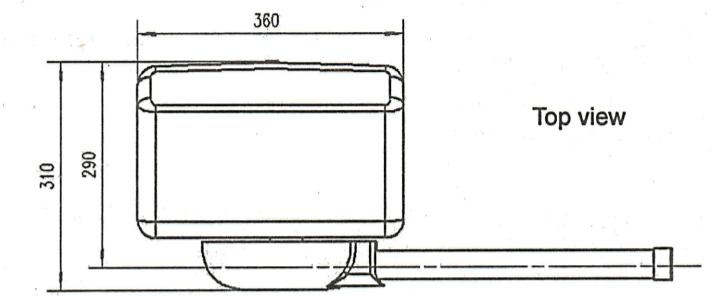


NOTES:



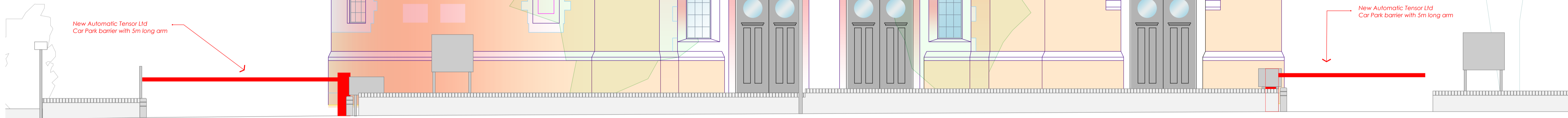
Barrier cabinet



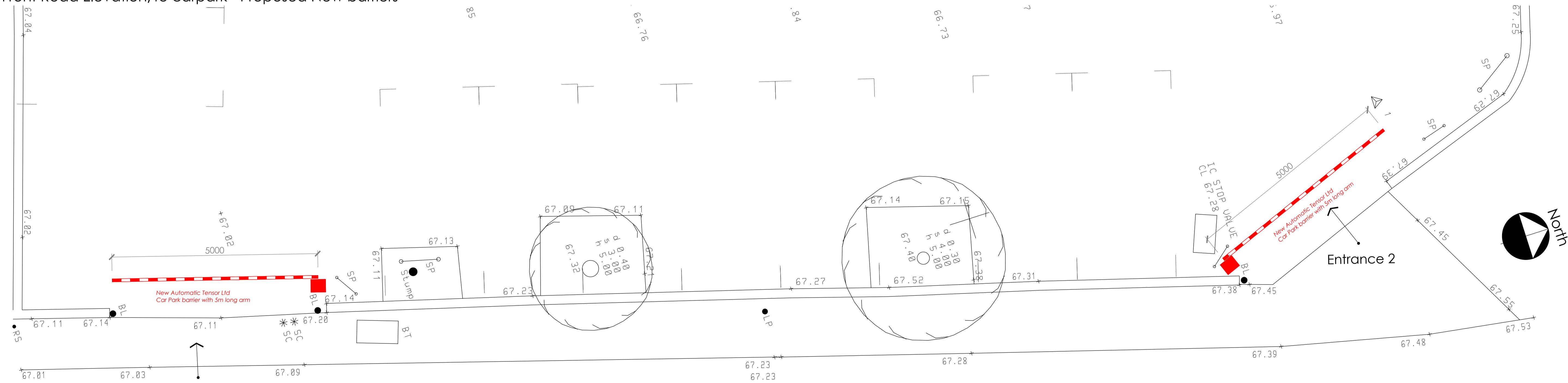
1:10 Detail drawing showing proposed 5m long Tensor BA5-51 automatic barriers



Photo showing typical barrier



Front Road Elevation/to carpark - Proposed New barriers



COPYRIGHT:
This drawing is the copyright of Mathews Serjeant Architects Ltd. and is therefore reserved. It is issued on condition that it is not to be copied, or reproduced in any form or disclosed to any unauthorised person, either wholly or in part, without the express written consent of Mathews Serjeant Architects Ltd.

Do not scale from this drawing.
This drawing is to be read in conjunction with all relevant architect's and engineer's drawings and specification. Contractors must verify all dimensions/levels on site prior to construction and preparation of shop drawings. Any discrepancies must be reported to the architect/contract administrator immediately for verification.

REVISIONS:

Part Plan /Front of site indicating siting of new 5m long automatic barriers

Access from High Elms Road

CLIENT:
Woodford Green UFC

PROJECT:
New Carpark Barriers

ISSUE:

DRAWING:
Proposed New car Park Entrance Barriers

SCALE:
1:50 & 1:10 (@A1)

DWG. NO.:
2146 P 02

Mathews Serjeant Architects Ltd. 23 Bellingham Lane, Rayleigh, Essex, SS6 7ED Tel: 01268 777077 Email: studio@ms-architects.co.uk

mathews . serjeant
ARCHITECTS